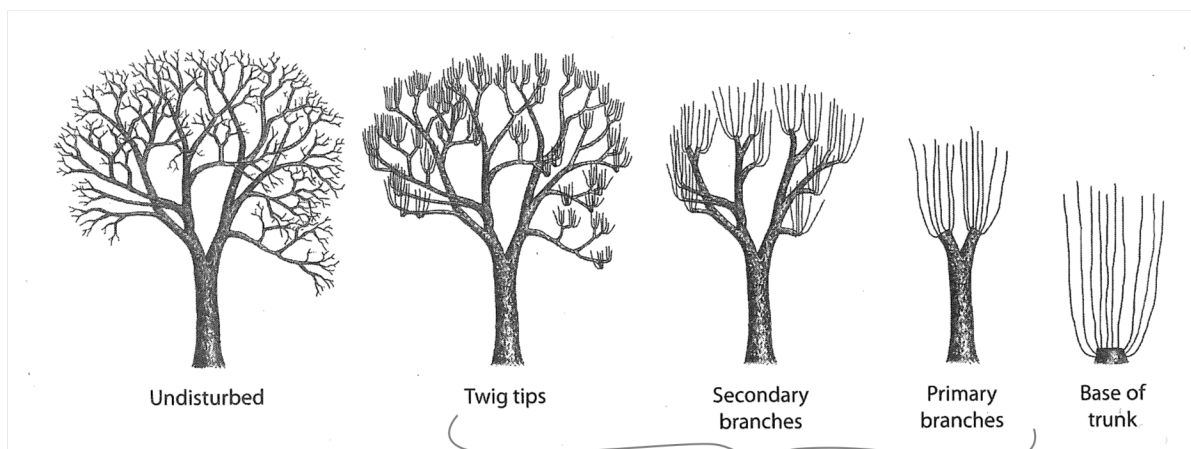


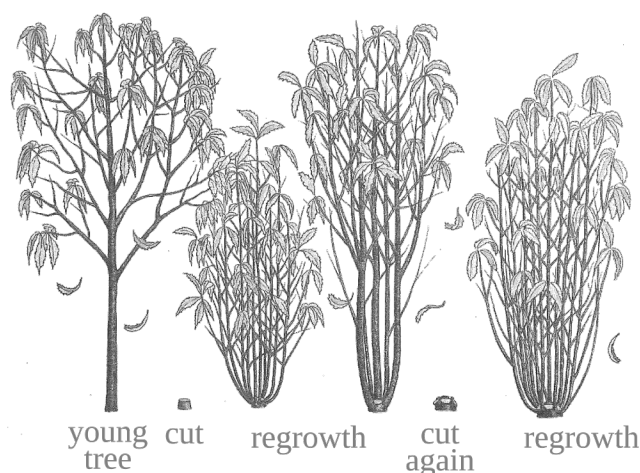
# Regenerative wood-cutting: *resprout* cultivation

Pruning trees for fuel and materials

**The Value of Sticks:** fuel & endless other uses, elegance, abundance and ease



Coppice



Pollard

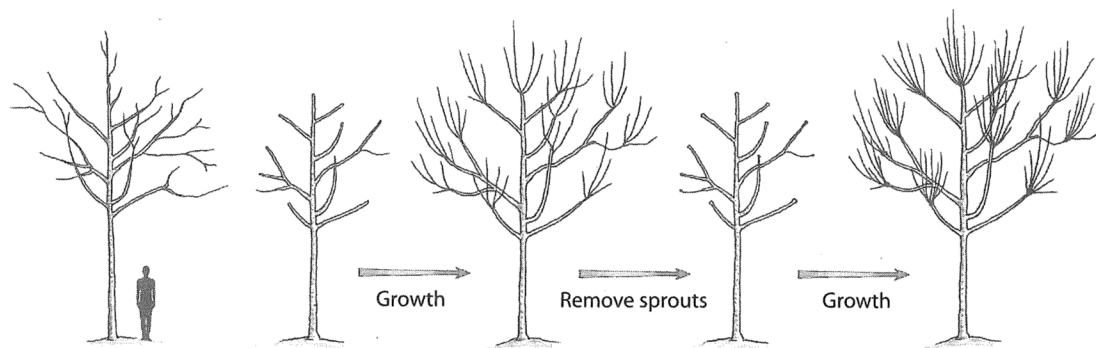
Coppice

**Coppicing** and **pollarding** are primary techniques among *resprout cultivation*.

Trees can be cyclically cut, from annual to 30-year cycles, for many centuries.

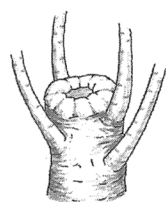
Mature root systems produce usable wood at a rate much faster than tree-killing forestry practices.

Pollard

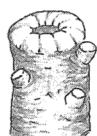


Initial head cuts

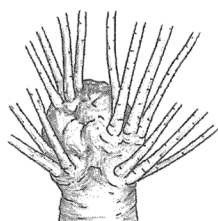
Head cut back to same point



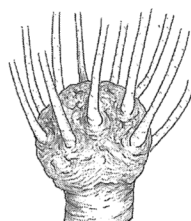
Four sprouts from first heading cut one year after pruning.



Four sprouts removed. Short stubs left to retain buds.



Two to four sprouts grow from each removed sprout. Pollard head is developed.



Developed pollard head several years later is considerably wider in diameter than stem.



After pruning sprouts from pollard head.

